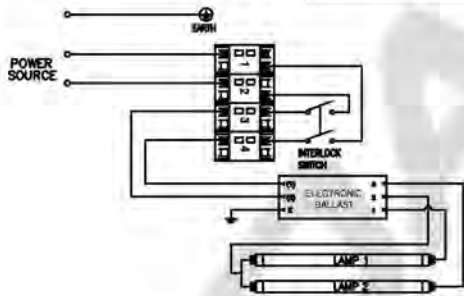
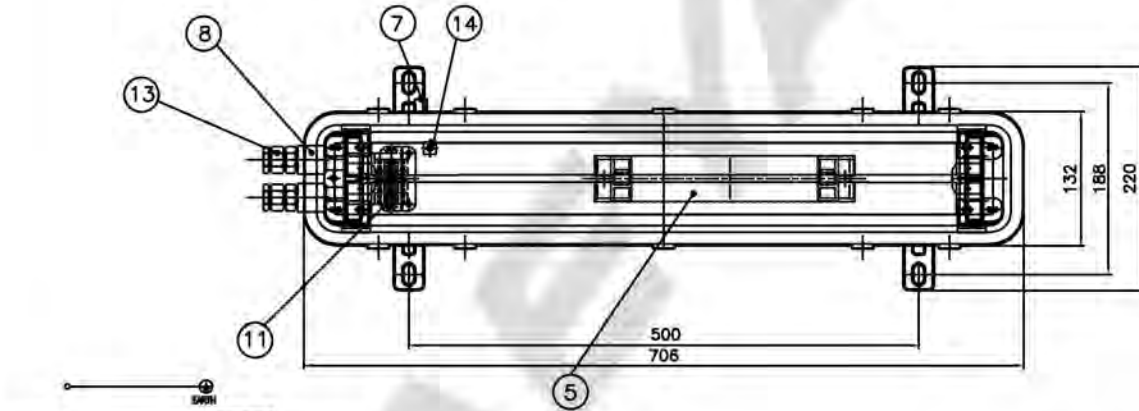
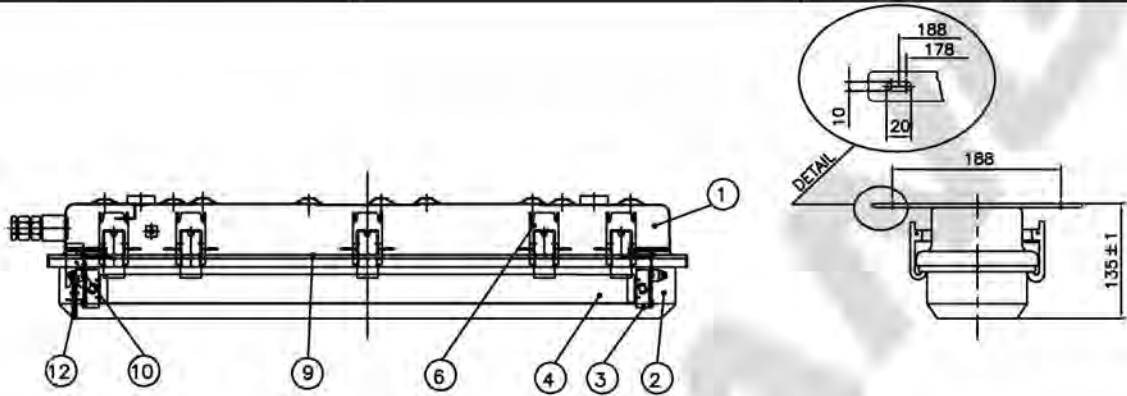
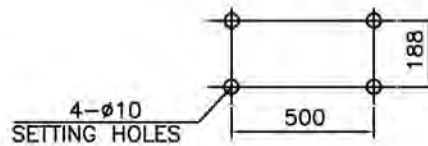


CAPACITY	SYMBOL/SERIAL NO.	CIRCUIT DIAGRAM
AC 230V, 50Hz		
18W x 2		



CIRCUIT DIAGRAM



SETTING DIMENSION

14	INSIDE EARTH BOLT	STAINLESS STEEL316	1		7	OUTSIDE EARTH BOLT	STAINLESS STEEL316	1	M6
13	CABLE GLAND(M25)	BRASS	2	E1XF-25a (ø17.5~ø22)	6	LATCH	STAINLESS STEEL316L	10	
12	INTERLOCK SHAFT	BRASS	1		5	ELECTRONIC BALLAST	-	1	
11	TERMINAL BLOCK	-	1	4P	4	LAMP (2-PIN)	-	2	OSRAM LUMILUX T8
10	INTERLOCK SWITCH	-	1		3	LAMP HOLDER	PA66	4	
9	REFLECTOR	STEEL	1		2	GLOBE	POLYCAR-BONATE	1	
8	GLAND HUB(M25)	STAINLESS STEEL316	2		1	BODY	STAINLESS STEEL316L	1	
NO	NAME OF PART	MATERIAL	Q'TY	REMARKS	NO	NAME OF PART	MATERIAL	Q'TY	REMARKS

APPROVED	O. J. KWON	UNIT	MM	TITLE: INCREASED SAFETY TYPE FLUORESCENT LIGHT (Ex demb IIC T4 Gb) FOR MARINE USE			
CHECKED		SCALE	N/S				
DESIGN	B. I. KIM	COLOR	N-9.3				
DATE	2019.03.03	IP	66/67				
DAEYANG				MODEL NO.	FL-220edg235M25a2H	WEIGHT	4.9 Kg
				DWG NO.	L71B70279	SHEET NO.	5